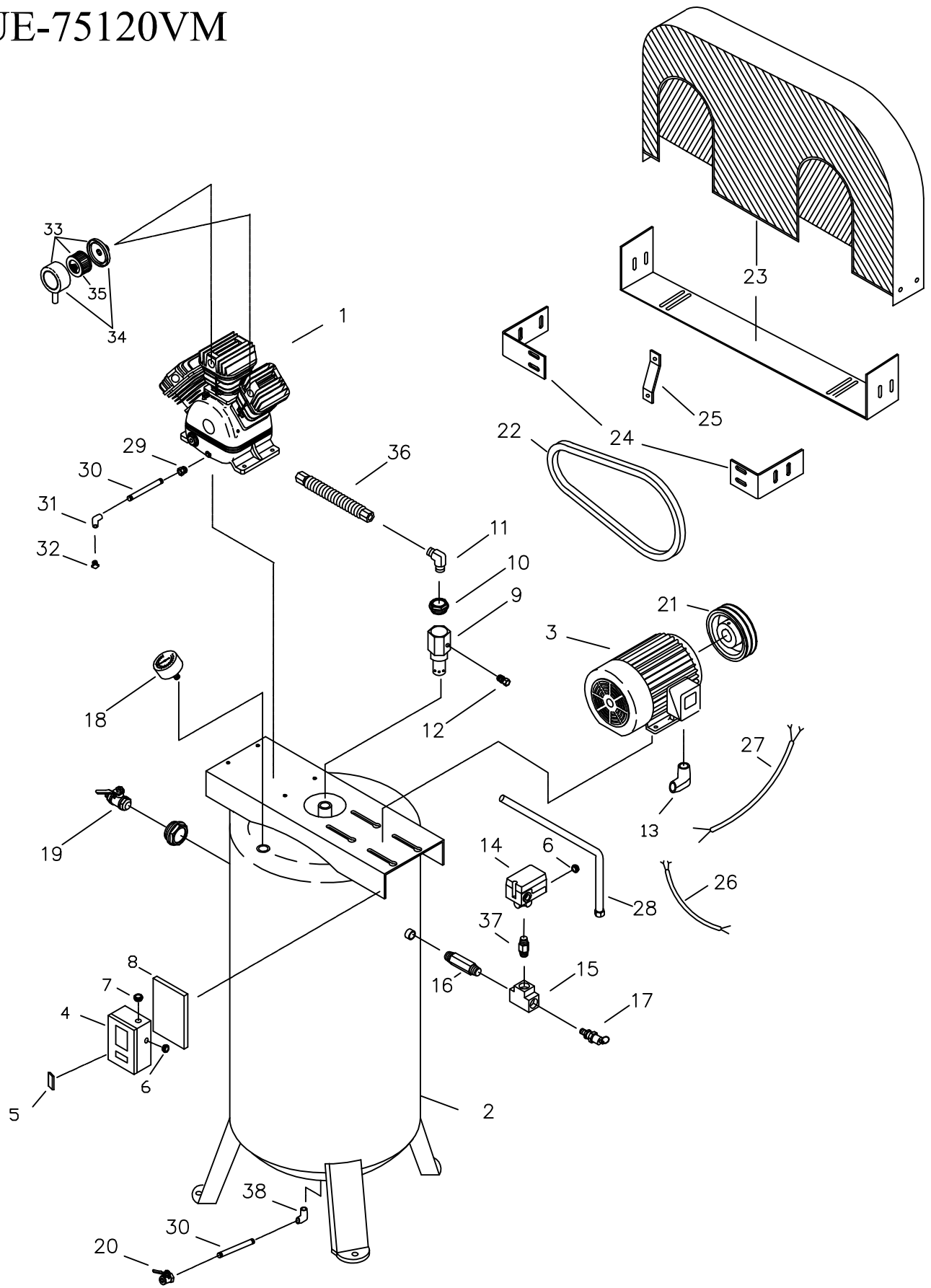


TUE-75120VM



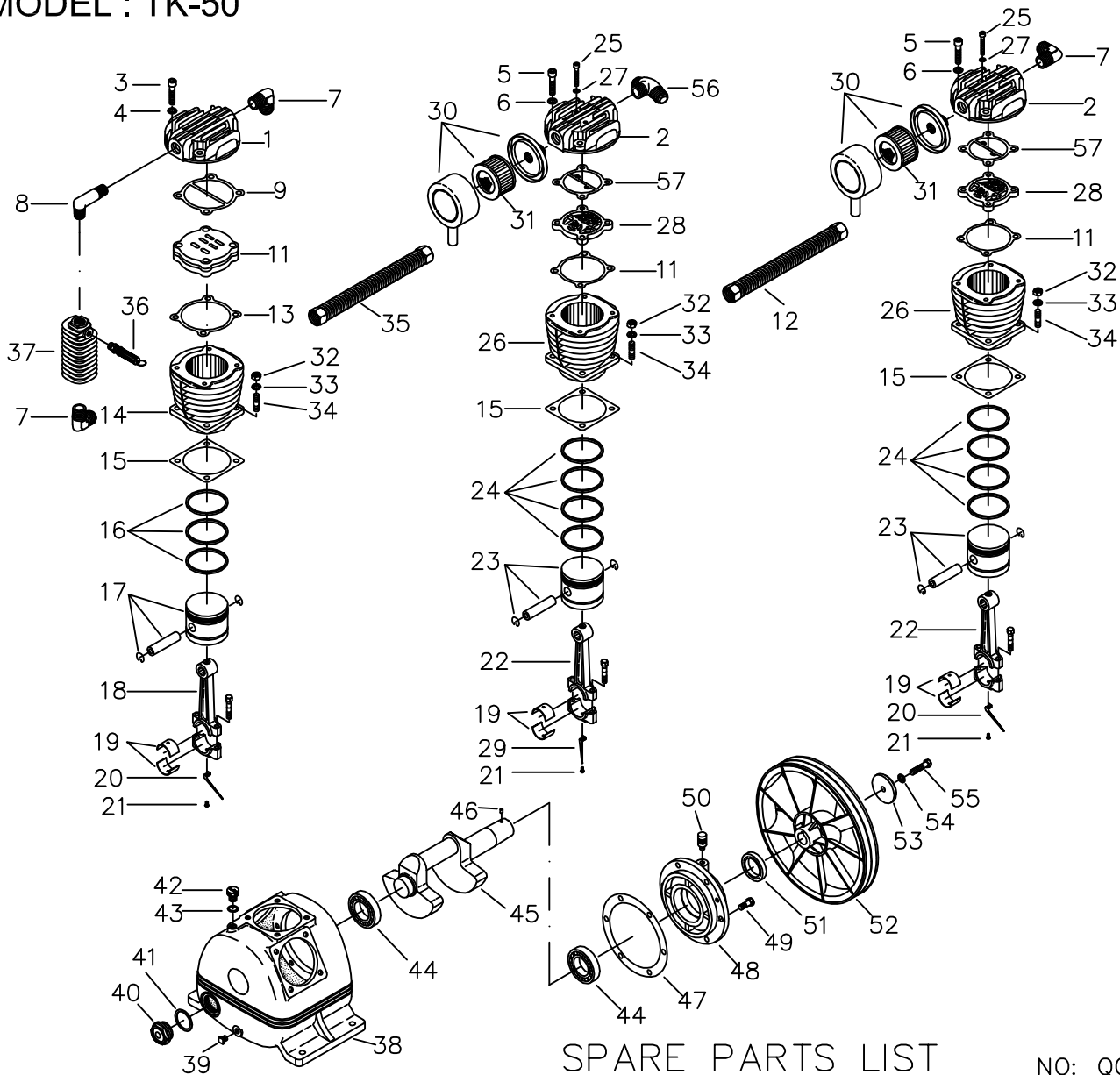
PARTS LIST

Model: TUE-75120VM

VERSION: OF-027A.R01

REF. NO.	PARTS ID	DESCRIPTION	QUANTITY
1	TK-50	PUMP	1.00
2	4001-120V	TANK	1.00
	050-20MN04FN	BUSHING (LEFT)	1.00
	050-20MN02FN	BUSHING (BOTTOM)	1.00
3	4027-75-21	MOTOR	1.00
4	MS-75-1	MAGNETIC STARTER	1.00
5	B-45	HEATER ELEMENT (FUSE)	1.00
6	025A-03N-000	WIRE CLAMP	2.00
7	025A-06N-000	WIRE CLAMP	1.00
8	3417010	BRACKET - (for STARTER)	1.00
9	CV1010M	CHECK VALVE	1.00
10	050-10MN06FN	BUSHING	1.00
11	2N06-06T06H	ELBOW	1.00
12	035-02RN01MN-00	NIPPLE (STRAIGHT TUBE FITTING)	1.00
13	025A-06N90D-00	WIRE CLAMP (w/ 90 degree elbow)	1.00
14	056-LF175P1-M01	PRESSURE SWITCH	1.00
15	067-02FFFNB-00	TEE	1.00
16	2N01-016	NIPPLE	1.00
17	84006010	PRESSURE RELIEF VALVE	1.00
18	2D12-25D20K	PRESSURE GAUGE	1.00
19	2413007	SERVICE VALVE	1.00
20	2413020N	DRAIN VALVE	1.00
21	2AL44	PULLEY	1.00
21	048A-11SS-001	PULLEY BUSHING	1.00
22	2N31-A66	BELT (A66)	2.00
23	3427009	BRACKET - BOTTOM	1.00
23	3426024	BELT GUARD	1.00
24	3427028	BRACKET	2.00
25	3427015	BRACKET - CENTER	1.00
26	025-A08W1BX540	ELECTRIC CABLE (STARTER - MOTOR)	2.00
26	025-A12W1GX540	GROUND CABLE (STARTER - MOTOR)	1.00
26	025C-A04X330	ALUMINUM CABLE CONDUIT	1.00
27	2E02-3530702Y2F	ELECTRIC CABLE (STARTER - PRESSURE SWITCH)	1.00
28	063-CU01X710	TUBE (CHECK VALVE - PRESSURE SWITCH)	1.00
29	2N02-02T02NC	ADAPTOR	1.00
30	035-02NX54-R00	NIPPLE	2.00
31	024-02FFN90D-00	ELBOW	1.00
32	046-02N-SH00	PLUG	1.00
33	2140009A	AIR FILTER ASSEMBLY	2.00
34	2140009	AIR FILTER HOUSING	2.00
35	1801 (2142002)	FILTER ELEMENT	2.00
36	3B2-06800	DISCHARGE TUBE	1.00
37	035-02NX10-H00	NIPPLE	1.00
38	024-02MFN90D-00	STREET ELBOW	1.00

MODEL : TK-50



SPARE PARTS LIST

NO: QC-0203

REF. NO.	DESCRIPTION	PART NO.	QTY	REF. NO.	DESCRIPTION	PART NO.	QTY
1	Cylinder head	3101043	1	30	Air filter	2140009	2
2	Cylinder head	3101018	2	31	Filter element	2142002	2
3	Hex socket bolt	2B01-M06*040	4	32	Hex nut	2B20-FM10	12
4	Lock washer	2B33-M06	4	33	Lock washer	2B33-M10	12
5	Hex socket bolt	2B01-M10*050	8	34	Stud screw	2B11-003	12
6	Flat washer	2B33-M10	8	35	Discharge tube set	3B2-06*490	1
7	Discharge elbow	2N06-06T06H	3	36	Pressure relief valve	2406007	1
8	Discharge elbow	2N06-06T06T85	1	37	Intercooler	3125001	1
9	Cylinder head gasket	2G01-015	1	38	Crankcase	3301017	1
10	In. & Ex. valve assembly	3B13-K51	1	39	Oil draining plug	2N33-002	1
11	Valve plate gasket	2G03-005	2	40	Oil sight gauge	2303004	1
12	Discharge tube set	3B2-06*235	1	41	Oil sight gauge gasket	2G11-003	1
13	Valve plate gasket	2G03-010	1	42	Oil cap	2319004	1
14	Cylinder	3201029	1	43	O-ring	2N52-30*15	1
15	Cylinder gasket	2G04-009	3	44	Bearing	2N35-6306	2
16	Piston ring set (HP)	3B32-65	1	45	Crankshaft & counterweight	3304025	1
17	Piston set (HP)	3B31-T65	1	46	Pulley key	2N47-63*09	1
18	Rod	2315022A	1	47	Rear bearing end gasket	2G06-002	1
19	Bearing (rod bushing)	2316001	6	48	Rear bearing end	3311003	1
20	Oil splasher	2317019	2	49	Hex socket bolt	2B00-SM10*025	6
21	Bolt (+)	2B02-FM5*010	3	50	Breather	2321008	1
22	Rod	2315018	2	51	Oil seal	2N50-TC30*50*11	1
23	Piston set (LP)	3B31-80L	2	52	Pulley	3PBF-145A230	1
24	Piston ring set (LP)	3B32-80	2	53	Washer	2B34-13*52*14	1
25	Hex socket bolt	2B01-M06*055	4	54	Lock washer	2B33-M12	1
26	Cylinder	3201015	4	55	Hex socket bolt	2B00-SM12*050	1
27	Lock washer	2B31-005	4	56	Tee	2N09-06H06T06H2	1
28	In. & Ex. valve assembly	3B13-AP80	2	57	Cylinder head gasket	2G01-011	2
29	Oil splasher	2317018	1	58			

Wiring Schematic For PUMA Model: TUE-75120VM

Warning: This diagram is for your reference only. Please check with a qualified electrician for wiring to meet your local electrical wiring code. Manufacturer assumes no responsibility for changes to factory wiring.

